



Richmond Crescent, London, E4

BUTLER & STAG



**Butler & Stag are delighted to offer this fantastic four double bedroom, family home that is located on one of Highams Parks most desirable turnings.**



- Beautiful Family Home
- Kitchen/Diner
- Off Street Parking
- Four Bedroom House
- Modern Throughout
- Must Be Seen

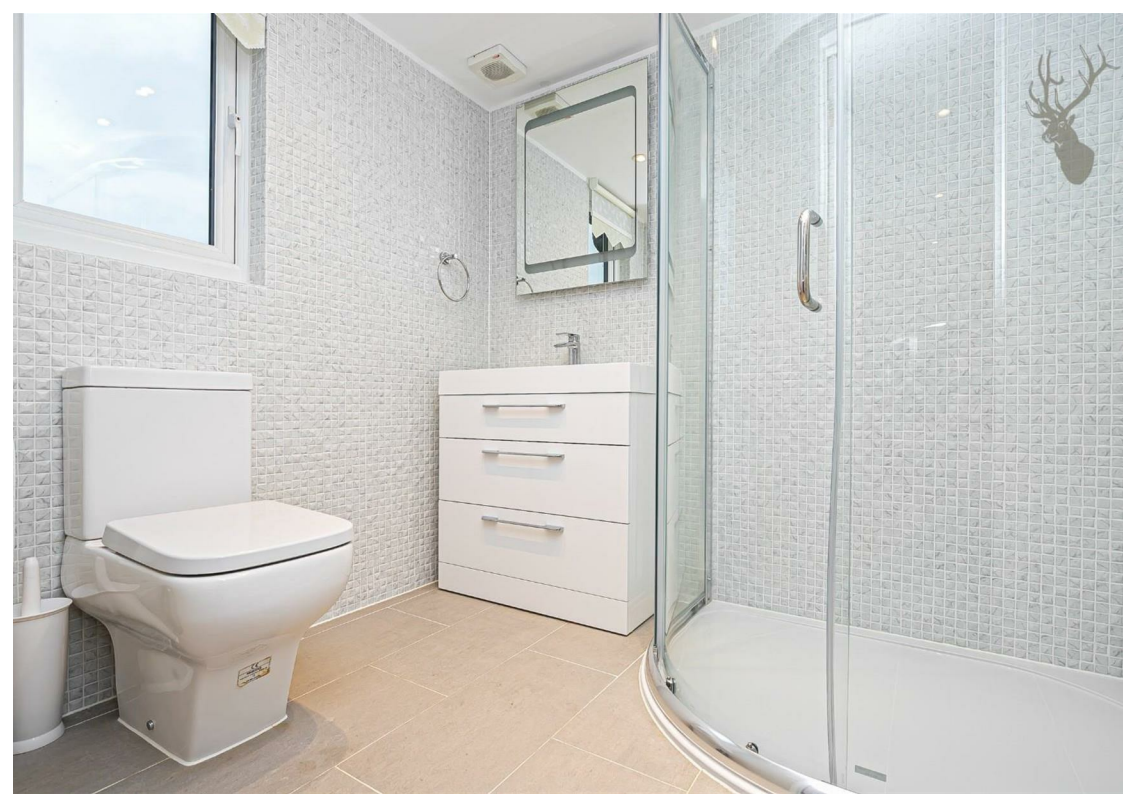
The property offers a modern kitchen/diner with a feature fireplace, downstairs shower room, separate reception room, four bedrooms, one en-suite shower room, fully tiled family bathroom, off street parking and a spacious well-maintained garden

Well regarded Highams Park school is within a half mile as well as many popular private schools, and Highams Park station offers access to Liverpool Street within 30 minutes.

Available Early July

Council Tax Band E





## Richmond Crescent, E4



Total area: approx. 143.09 Sq. meters (1540 Sq. feet)  
For illustration purposes only - not to scale  
[www.lpaplus.com](http://www.lpaplus.com)

# BUTLER & STAG

☎ 020 8504 9000

🏠 184 Queen's Road, Buckhurst Hill, IG9 5BD

✉ [buckhursthill@butlerandstag.com](mailto:buckhursthill@butlerandstag.com)

[www.butlerandstag.uk](http://www.butlerandstag.uk)

IMPORTANT NOTICE - These particulars have been prepared in good faith and they are not intended to constitute part of an offer or contract. We have not performed a structural survey on this property and the services, appliances and specific fittings have not been tested. All photographs, measurements, floor plans and distances referred to are given as a guide and should not be relied upon.